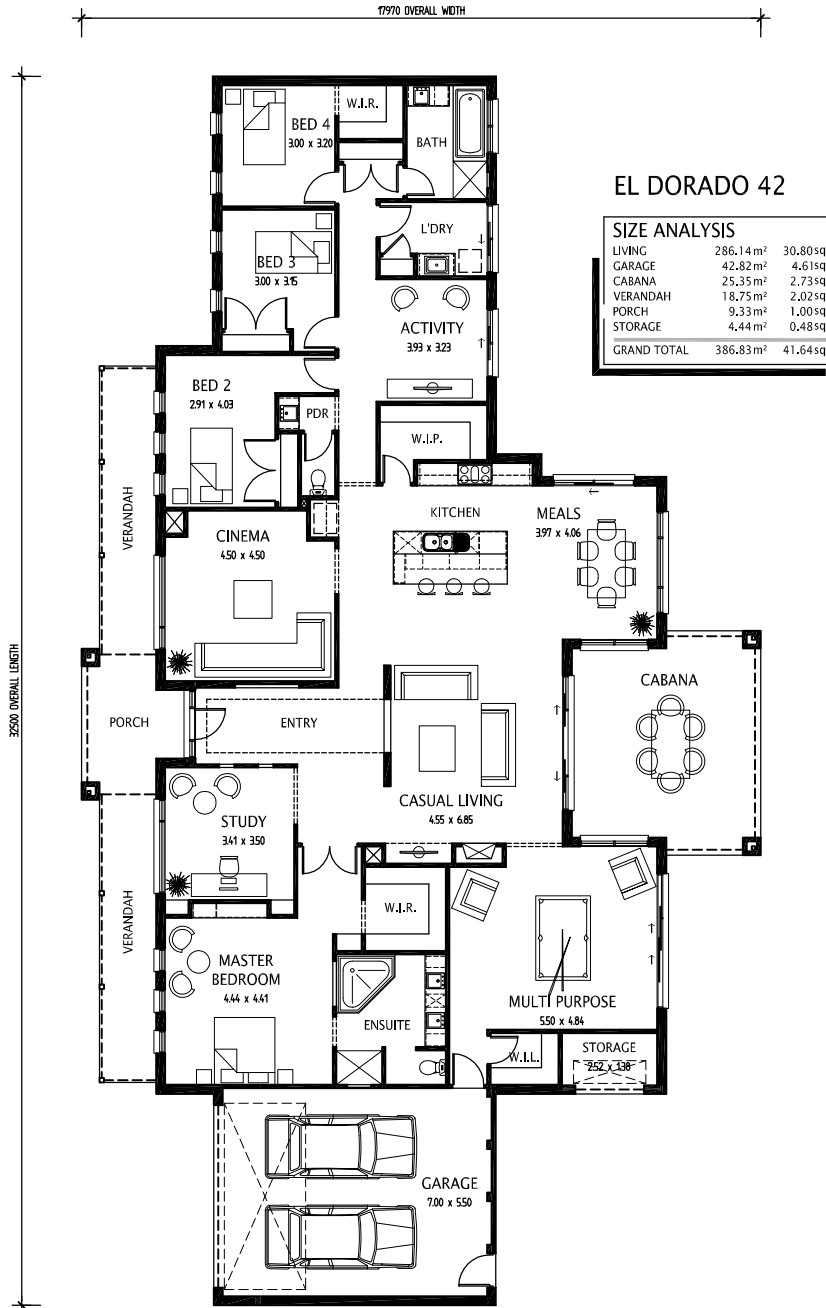


EL DORADO 42



AARON J HOMES

Unit 24, 3-11 Bate Close, Pakenham VIC 3810 ph: 03 5941 6399 fax: 03 5941 6311

sketch illustration - for presentation purposes only, refer to builders specification. sketch subject to soil test, site survey and compliance with relevant regulations. this drawing does not form part of any contract. © copyright 2007 Aaron J Homes

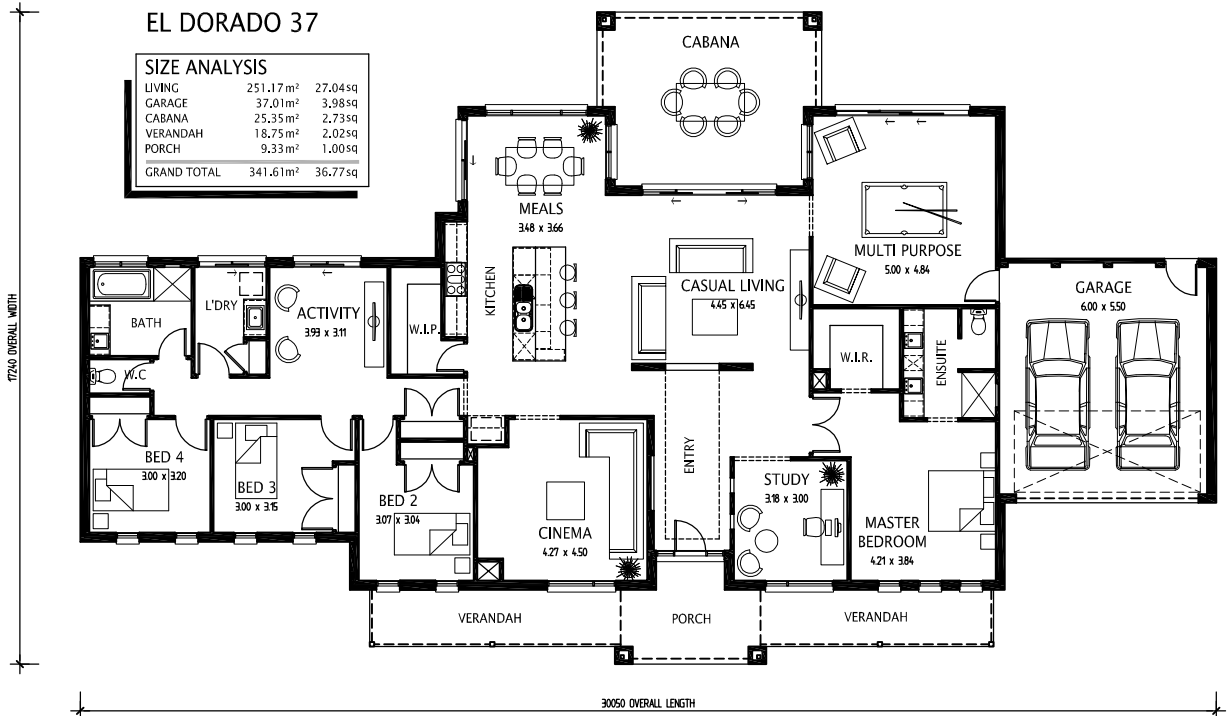


EL DORADO

EL DORADO 37

SIZE ANALYSIS

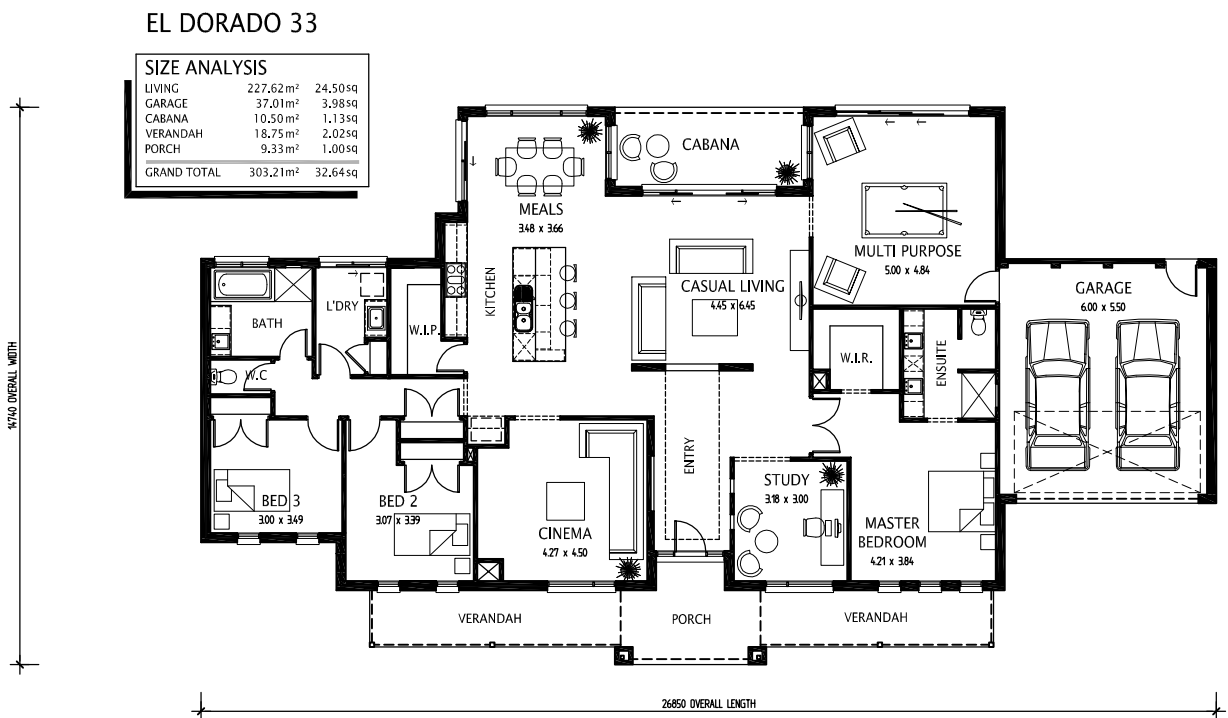
| | | |
|--------------------|----------------------------|----------------|
| LIVING | 251.17m ² | 27.04sq |
| GARAGE | 37.01m ² | 3.98sq |
| CABANA | 25.35m ² | 2.73sq |
| VERANDAH | 18.75m ² | 2.02sq |
| PORCH | 9.33m ² | 1.00sq |
| GRAND TOTAL | 341.61m² | 36.77sq |



EL DORADO 33

SIZE ANALYSIS

| | | |
|--------------------|----------------------------|----------------|
| LIVING | 227.62m ² | 24.50sq |
| GARAGE | 37.01m ² | 3.98sq |
| CABANA | 10.50m ² | 1.13sq |
| VERANDAH | 18.75m ² | 2.02sq |
| PORCH | 9.33m ² | 1.00sq |
| GRAND TOTAL | 303.21m² | 32.64sq |



AARON J HOMES

Unit 24, 3-11 Bate Close, Pakenham VIC 3810 ph: 03 5941 6399 fax: 03 5941 6311

sketch illustration - for presentation purposes only, refer to builders specification. sketch subject to soil test, site survey and compliance with relevant regulations. this drawing does not form part of any contract. © copyright 2007 Aaron J Homes



EL DORADO

FACADE OPTIONS



EL DORADO - CONTEMPORARY



EL DORADO - NEO FEDERATION



EL DORADO - COASTAL

AARON J HOMES

Unit 24, 3-11 Bate Close, Pakenham VIC 3810 ph: 03 5941 6399 fax: 03 5941 6311

sketch illustration - for presentation purposes only, refer to builders specification. sketch subject to soil test, site survey and compliance with relevant regulations. this drawing does not form part of any contract. © copyright 2007 Aaron J Homes

